

**Linc**  
proudly presents..

**Saturday 25 June 2011**

OPEN AIR CONCERT

**7.30**pm at

**Cheltenham**

**Racecourse**

Tickets **£40** each

(plus booking fee)

available from:

Cheltenham Town Hall

**08445 762210**

& Everyman Theatre

**01242 572573**

Hospitality

packages

available

**08454 224422**

Doors open

for picnics

at **6pm**

Bring seating

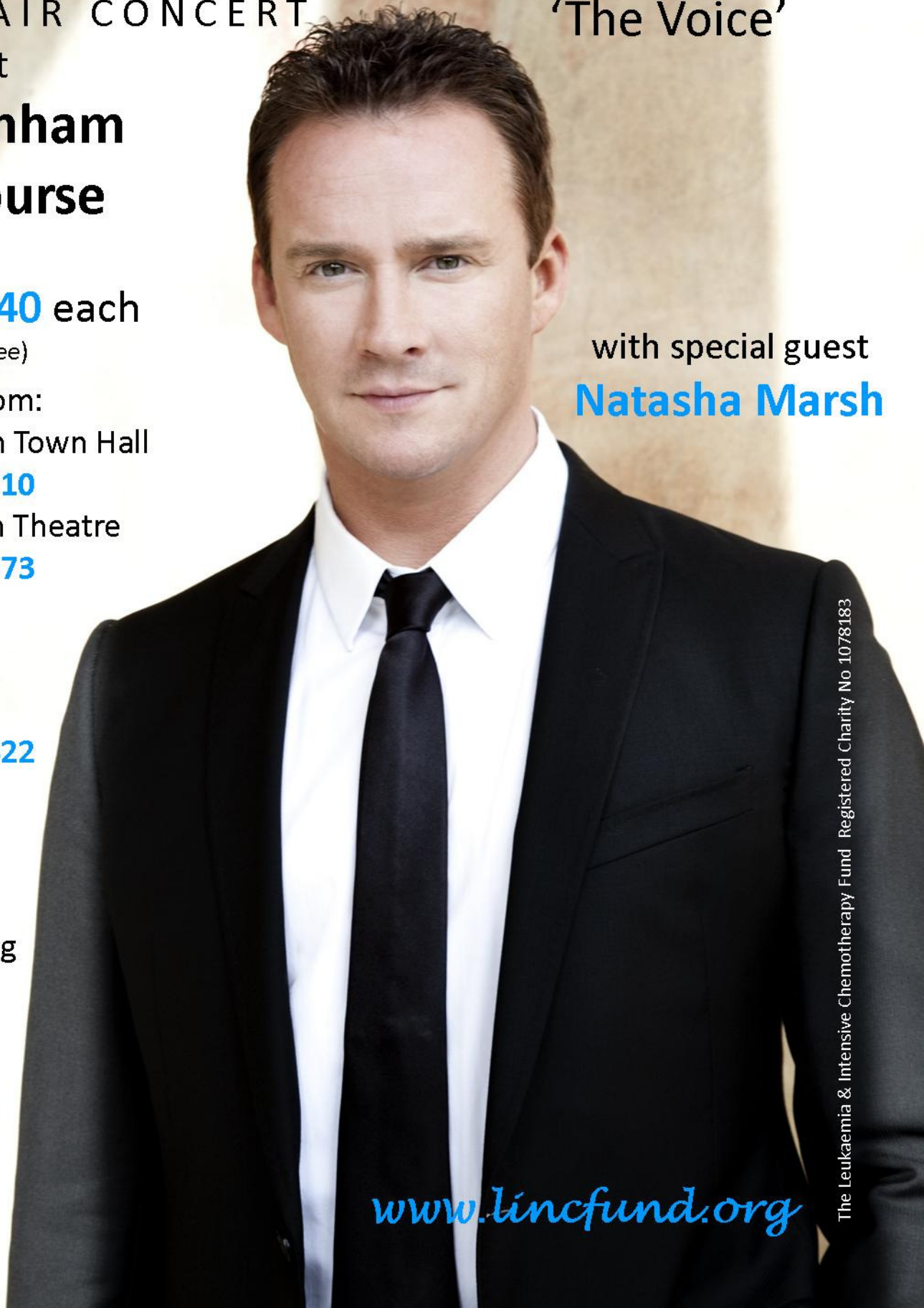
and blanket

**Russell**  
**Watson**

'The Voice'

with special guest

**Natasha Marsh**



[www.lincfund.org](http://www.lincfund.org)